

**Montgomery Township School District**



# **Proposed Budget Hearing 2021-22**

---

*Maintaining Excellence*

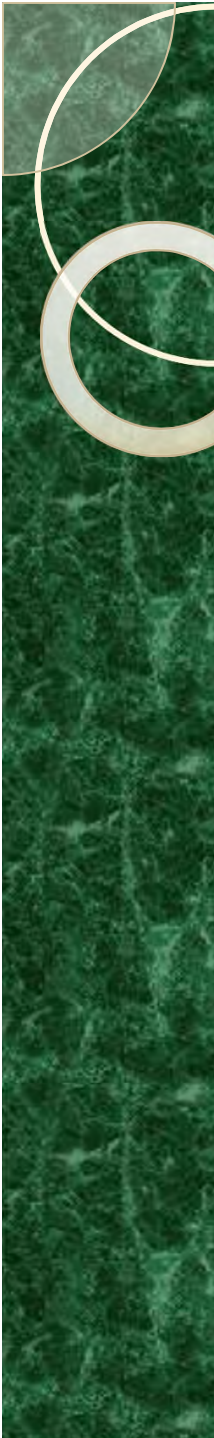
---

**April 27, 2021**

# Montgomery Township School District Agenda



- **Factors in Building a Budget**
- **Budget Development Process**
- **Explanation of Funds**
- **Enrollment**
- **Sources of Revenue**
- **Proposed Expenditures**
- **Tax Impact**
- **Questions**



# Montgomery Township School District

## Factors Included in the Process of Planning a Budget



- Revenue Restrictions
- Student Achievement
- SEL, Mental Health/Learning Loss due to COVID
- Safety and Security/COVID Management
- Student Transportation
- Enrollment
- Class Size
- Special Education
- Staffing, Contracts and Benefits
- Program Offerings
- Technology
- Professional Development
- Curriculum and Instruction
- Supplies and Equipment
- Facilities and Maintenance

# Montgomery Township School District Budget Development Process



**The budget development process is ever going with the board, administration and community**

- **September 2020** - District staff collaboratively determine needs for the 2021-22 budget
- **January/February 2021** – Superintendent and central office administration review budget requests for reasonableness of needs within district resources
- **February 25, 2021** – State aid notices were released to school districts
- **March 5, 2021** – Proposed budget presented to Operations, Facilities and Finance Committee

# Montgomery Township School District Budget Development Process



- **March 16, 2021** – Proposed budget presented to the Board and the Board of Education adopts a tentative budget
- **March 22, 2021** - District submits the budget to the Executive County Superintendent for approval
- **April 20, 2021** - The Executive County Superintendent approval is required prior to advertising
- **April 23, 2021** – Advertised budget and notice of public hearing in the newspaper
- **April 27, 2021** - Public Hearing and Board of Education adoption of the 2021-22 school budget

# Montgomery Township School District Explanation of Funds



- **General Fund**
  - **Operating Budget**
  
- **Special Revenue Fund**
  - **State, Federal and Local Grants**
  
- **Debt Service Fund**
  - **Principal and Interest Payments on Existing Debt**

# Montgomery Township School District Enrollment



<b>Fiscal Year</b>	<b>Enrollment</b>	<b>Change in Enrollment</b>	<b>Percentage Change in Enrollment</b>
<b>2021/2022*</b>	<b>4629</b>	<b>-22</b>	<b>-0.49%</b>
<b>2020/2021</b>	<b>4651</b>	<b>-21</b>	<b>-0.45%</b>
<b>2019/2020</b>	<b>4672</b>	<b>-12</b>	<b>-0.26%</b>
<b>2018/2019</b>	<b>4684</b>	<b>-103</b>	<b>-2.15%</b>
<b>2017/2018</b>	<b>4787</b>	<b>-12</b>	<b>-0.25%</b>
<b>2021/2022 are Estimated Projections</b>			

# Montgomery Township School District

## Sources of Revenue

### General Fund



Where Does the Money Come From?



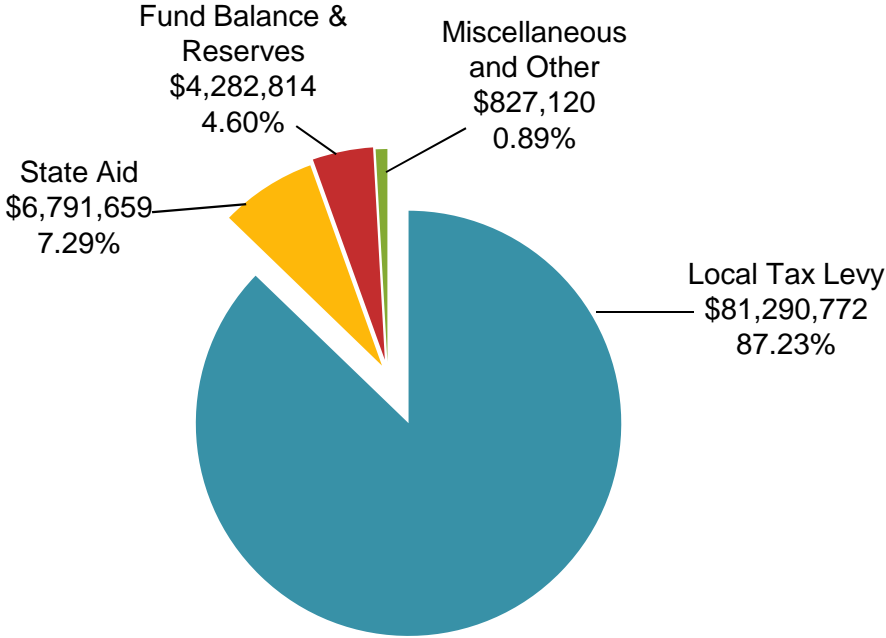
15



# Montgomery Township School District

## General Fund Revenues

### \$93,192,365



# Montgomery Township School District



## 2021-22 Budget Sources of General Fund Revenues

Source	2020-21	2021-22	\$ Inc/(Dec)
Local Taxes	79,696,835	81,290,772	1,593,937
State Aid	6,557,202	6,791,659	234,457
Fund Balance & Reserves	4,293,836	4,282,814	(11,022)
<u>Miscellaneous &amp; Other</u>	<u>979,746</u>	<u>827,120</u>	<u>(152,626)</u>
<b>Total General Fund</b> =====	<b>91,527,619</b> =====	<b>93,192,365</b> =====	<b>1,664,746</b> =====

# Montgomery Township School District



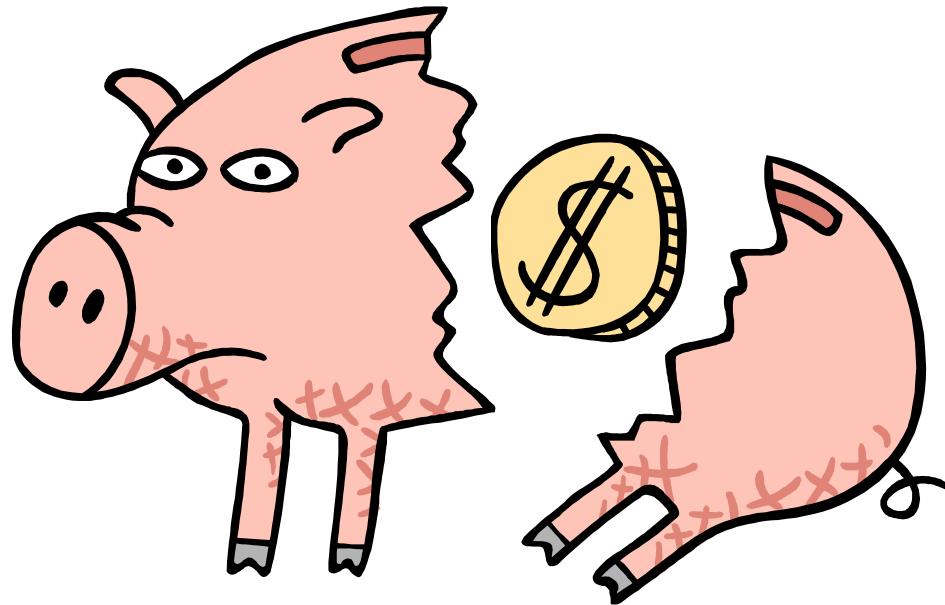
## 2021-22 Budget Sources of Debt Service Fund Revenues

Source	2020-21	2021-22	\$ Inc/(Dec)
Local Taxes	7,097,597	7,206,184	108,587
State Aid	712,773	691,892	(20,881)
Transfer from Capital Reserve	338,895	0	(338,895)
<u>Fund Balance &amp; Reserves</u>	<u>22,530</u>	<u>92,300</u>	<u>69,770</u>
<b>Total General Fund</b> =====	<b>8,171,795</b> =====	<b>7,990,376</b> =====	<b>(181,419)</b> =====

**Montgomery Township School District**  
**Proposed Expenditures**  
**General Fund**

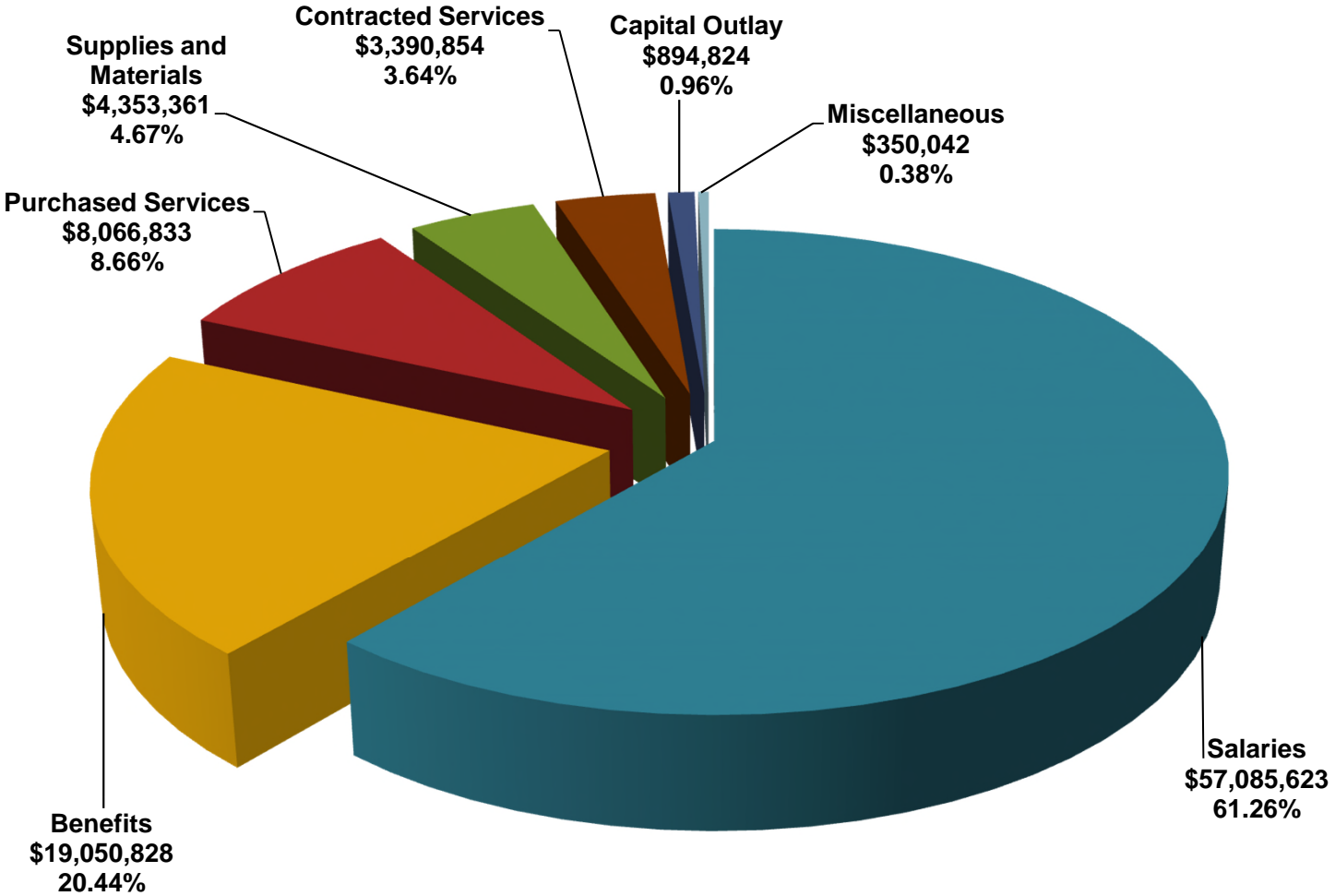


**Where Does the Money Go?**



# Montgomery Township School District

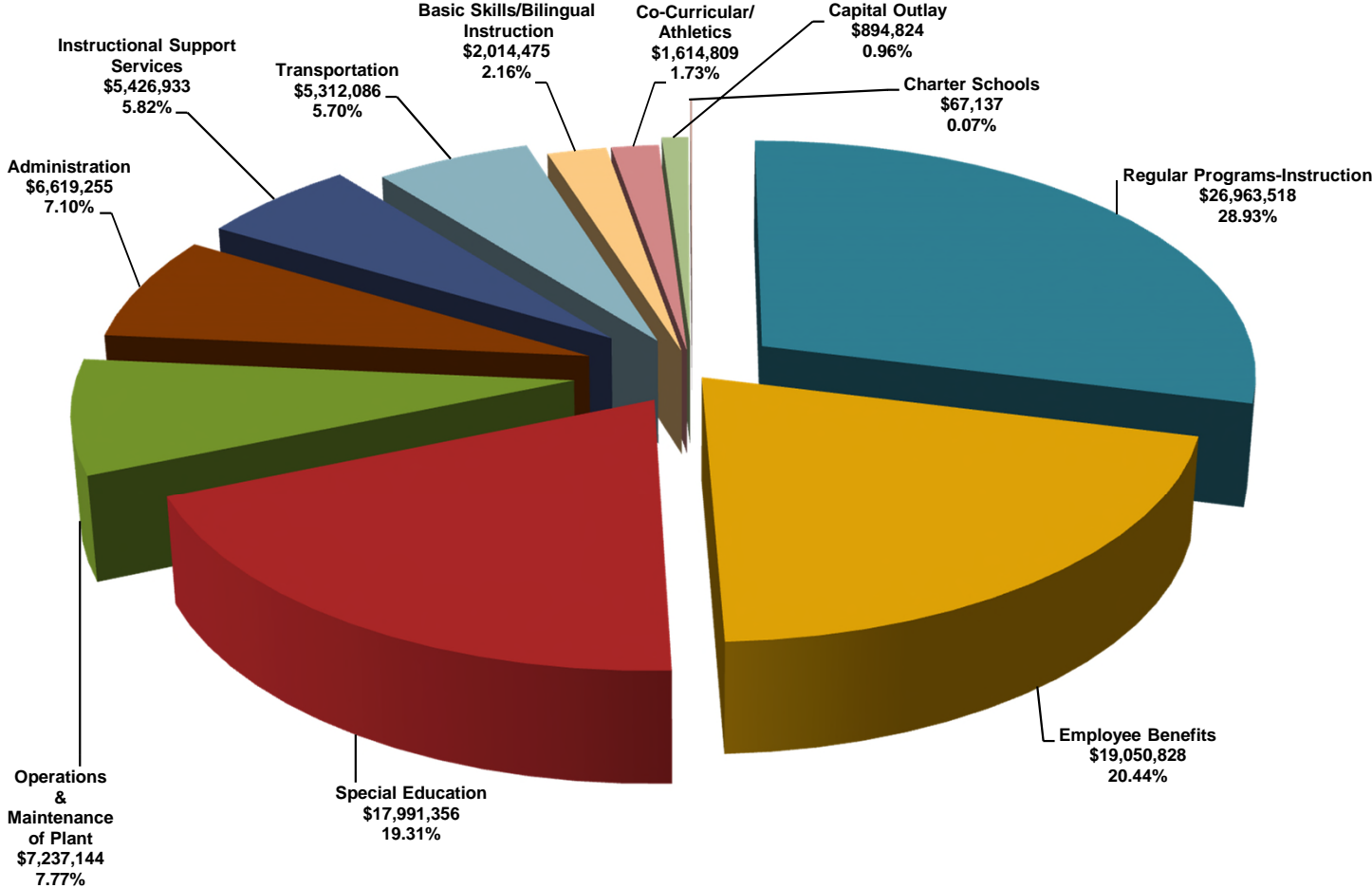
## General Fund Proposed Expenditures (Object) \$93,192,365



# Montgomery Township School District

## General Fund Proposed Expenditures (Function)

### \$93,192,365



# Montgomery Township School District

## General Fund Function Comparison



	2020-21	2021-22	\$ Inc/(Dec)	% Inc/(Dec)
Regular Programs-Instruction	25,949,878	26,963,518	1,013,640	3.76%
Employee Benefits	18,713,572	19,050,828	337,256	1.77%
Special Education	17,525,039	17,991,356	466,317	2.59%
Operations & Maintenance of Plant	7,740,599	7,237,144	(503,455)	(6.96)%
Administration	6,902,588	6,619,255	(283,333)	(4.28)%
Instructional Support Services	5,261,462	5,426,933	165,471	3.05%
Transportation	5,159,966	5,312,086	152,120	2.86%
Basic Skills/Bilingual Instruction	1,809,397	2,014,475	205,078	10.18%
Co-Curricular/Athletics	1,667,576	1,614,809	(52,767)	(3.27)%
Capital Outlay	703,057	894,824	191,767	21.43%
Charter Schools	<u>94,485</u>	<u>67,137</u>	<u>(27,348)</u>	<u>(40.73)%</u>
<b>Total General Fund</b>	<b>91,527,619</b>	<b>93,192,365</b>	<b>1,664,746</b>	<b>1.82%</b>

# Montgomery Township School District



## Tax Impact Montgomery Township

<b>Assessed Valuation</b>	<b>\$3,940,564,795</b> <b>+\$20,386,518 (+.06%)</b>
<b>Estimated Projected School Tax Rate</b>	<b>\$2.195</b> <b>+.033 per \$100 Assessed Valuation</b>
<b>Average Assessment</b>	<b>\$503,640</b> <b>+\$170</b>



# Montgomery Township School District



## Tax Impact Rocky Hill

<b>Assessed Valuation</b>	<b>\$138,724,369</b> <b>+\$6,558,269 (+4.96%)</b>
<b>Estimated Projected School Tax Rate</b>	<b>\$1.463</b> <b>+.00 per \$100 Assessed Valuation</b>
<b>Average Assessment</b>	<b>\$470,458</b> <b>-\$13</b>

# Montgomery Township School District



## District Three Year Plan Priorities

**Later High School Start Time**

**Full Day Kindergarten**

**Safety and Security Upgrades**



# Questions



# Montgomery Township School District



## Proposed Ballot Question November 2, 2021

### Full Day Kindergarten

**Question: Shall the Montgomery Township Board of Education raise an additional \$1,149,616 in taxes for the 2021-2022 school year to provide a full day kindergarten program?**

**Interpretive Statement: This means that approving \$1,149,616 for 6 additional kindergarten teachers, teaching supplies and health services will lead to a permanent increase in the tax levy and will be added to the current tax levy to set the permissible tax levy for future school years**

\$1,109,553	salary and health benefits
\$ 38,019	teaching supplies
<u>\$ 2,044</u>	health services
\$1,149,616	